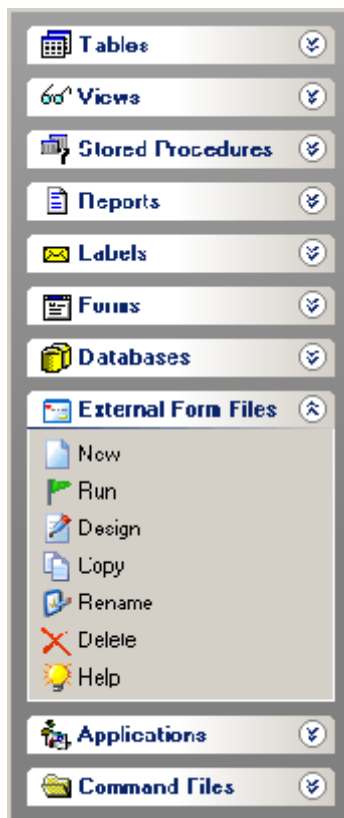


From The Edge:

Using PAUSE 3 with OPTION GAUGE and ProcessMessage

(R:BASE 7.6 and Turbo V-8 for Windows)



This is the database you have always wanted!

A. Razzak Memon

August 7, 2007

From the Edge: Using PAUSE 3 with OPTION GAUGE and ProcessMessage
Section: Enhanced PAUSE 3 Command
Chapter: Running R:BASE Your Way!
Platform: R:BASE 7.6 and Turbo V-8 for Windows

Among many enhancements as well as requested features, the latest updates of R:BASE 7.6, R:BASE 7.6 (C/S:!) and Turbo V-8 for Windows offer many cool features to display an on-going PAUSE 3 message with moving GIFs or GAUGE while a long process is going underway behind the scenes. This offers a nice message so that the end-user is kept aware of the process.

Example 01:

```
-- Start
-- PAUSE3_With_HourGlass.RMD
SET VAR vPauseMessage TEXT = +
((CHAR(013)) + 'Computing - Please Wait .....')
CLS
PAUSE 3 USING .vPauseMessage +
CAPTION 'Pause 3' +
OPTION ICON_FILE Hourglass.GIF +
|BACK_COLOR WHITE +
|MESSAGE_COLOR WHITE +
|MESSAGE_FONT_NAME VERDANA +
|MESSAGE_FONT_COLOR RED +
|MESSAGE_FONT_SIZE 10 +
|THEMENAME R:BASE Rocks!
-- a very long process or updates here ...
CLEAR VARIABLE vPauseMessage
CLS
RETURN
-- End
```

Example 02:

```
-- Start
-- PAUSE3_With_Gauge_Razzmatazz.RMD
-- R:BASE Rocks: [R218,G228,B246]
CLS
PAUSE 3 USING '      Calculating    ...   Please Stand By    ...' +
CAPTION ' Pause 3 with Gauge ' ICON APP +
OPTION GAUGE_VISIBLE ON +
|GAUGE_COLOR [R218,G228,B246] +
|GAUGE_INTERVAL 10 +
|MESSAGE_FONT_NAME VERDANA +
|MESSAGE_FONT_SIZE 10 +
|MESSAGE_FONT_COLOR BLUE +
|THEMENAME Razzmatazz
-- a very long process or updates here ...
CLS
RETURN
-- End
```

Example 03:

```
-- Start
-- PAUSE3_With_Gauge_RBASERocks.RMD
-- R:BASE Rocks: [R123,G82,B41] or 2708091
CLS
PAUSE 3 USING '      Calculating      ...  Please Stand By  ...' +
CAPTION ' Pause 3 with Gauge ' ICON APP +
OPTION GAUGE_VISIBLE ON +
|GAUGE_COLOR 2708091 +
|GAUGE_INTERVAL 10 +
|MESSAGE_FONT_NAME VERDANA +
|MESSAGE_FONT_SIZE 10 +
|MESSAGE_FONT_COLOR RED +
|THEMENAME R:BASE Rocks!
-- a very long process or updates here ...
RETURN
-- End
```

Example 04:

```
-- Start
-- PAUSE3_With_Gauge_SteelBlue.RMD
-- Steel Blue
CLS
PAUSE 3 USING '          Calculating      ...  Please Stand
By  ...' +
CAPTION '          Pause 3 with Gauge ' +
ICON WINDOWS +
OPTION GAUGE_VISIBLE ON +
|GAUGE_COLOR RED +
|GAUGE_INTERVAL 10 +
|MESSAGE_FONT_NAME VERDANA +
|MESSAGE_FONT_SIZE 10 +
|MESSAGE_FONT_COLOR WHITE +
|THEMENAME Steel Blue
-- a very long process or updates here ...
RETURN
-- End
```

Examples 01-04 are nice and quick way to display moving hour glass as well as the GAUGE.

Example 05:

```
-- Start
-- PAUSE3_With_HourGlass_WHILELOOP.RMD
SET VAR vPauseMessage TEXT = +
((CHAR(013))+'Computing - Please Wait .....')
CLS
PAUSE 3 USING .vPauseMessage +
CAPTION ' ' +
OPTION ICON_FILE Hourglass.GIF +
|BACK_COLOR WHITE +
|MESSAGE_COLOR WHITE +
|MESSAGE_FONT_NAME VERDANA +
|MESSAGE_FONT_COLOR RED +
|MESSAGE_FONT_SIZE 10 +
|THEMENAME R:BASE Rocks!
SET VAR vCounter INT = 1
WHILE vCounter < 250000 THEN
    SET VAR vCounter = (.vCounter + 1)
ENDWHILE
CLEAR VARIABLE vPauseMessage,vCounter
CLS
RETURN
-- End
```

Example 06:

```
-- Start
-- PAUSE3_With_Gauge_Razzmatazz_WHILELOOP.RMD
-- R:BASE Rocks: [R218,G228,B246]
CLS
PAUSE 3 USING '          Calculating ... Please Stand By ...' +
CAPTION ' Pause 3 with Gauge ' ICON APP +
OPTION GAUGE_VISIBLE ON +
|GAUGE_COLOR [R218,G228,B246] +
|GAUGE_INTERVAL 10 +
|MESSAGE_FONT_NAME VERDANA +
|MESSAGE_FONT_SIZE 10 +
|MESSAGE_FONT_COLOR BLUE +
|THEMENAME Razzmatazz
SET VAR vCounter INTEGER = 1
WHILE vCounter < 250000 THEN
    SET VAR vCounter = (.vCounter + 1)
ENDWHILE
CLEAR VARIABLE vCounter
CLS
RETURN
-- End
```

Example 07:

```
-- Start
-- PAUSE3_With_Gauge_RBASERocks_WHILELOOP.RMD
-- R:BASE Rocks: [R123,G82,B41] or 2708091
CLS
PAUSE 3 USING '      Calculating      ...   Please Stand By   ...' +
CAPTION ' Pause 3 with Gauge ' ICON APP +
OPTION GAUGE_VISIBLE ON +
|GAUGE_COLOR 2708091 +
|GAUGE_INTERVAL 10 +
|MESSAGE_FONT_NAME VERDANA +
|MESSAGE_FONT_SIZE 10 +
|MESSAGE_FONT_COLOR RED +
|THEMENAME R:BASE Rocks!
SET VAR vCounter INTEGER = 1
WHILE vCounter < 500000 THEN
    SET VAR vCounter = (.vCounter + 1)
ENDWHILE
CLEAR VARIABLE vCounter
CLS
RETURN
-- End
```

Example 08:

```
-- Start
-- PAUSE3_With_Gauge_SteelBlue_WHILELOOP.RMD
-- Steel Blue
CLS
PAUSE 3 USING '      Calculating      ...   Please Stand By   ...' +
CAPTION '      Pause 3 with Gauge ' +
ICON WINDOWS +
OPTION GAUGE_VISIBLE ON +
|GAUGE_COLOR RED +
|GAUGE_INTERVAL 10 +
|MESSAGE_FONT_NAME VERDANA +
|MESSAGE_FONT_SIZE 10 +
|MESSAGE_FONT_COLOR WHITE +
|THEMENAME Steel Blue
SET VAR vCounter INTEGER = 1
WHILE vCounter < 250000 THEN
    SET VAR vCounter = (.vCounter + 1)
ENDWHILE
CLEAR VARIABLE vCounter
CLS
RETURN
-- End
```

Examples 05-08 include a huge process within a WHILE loop as well as the GAUGE. However, notice that all system resources are used by the WHILE loop and there is no chance for the moving hour glass or GAUGE to move. As soon as the WHILE loop is in effect the moving hour glass or the gauge is stationary, which defeats the purpose for displaying moving hour glass or the GAUGE.

Keeping those observations in mind, a *new* ProcessMessage command has been introduced to free up the resources to display the process message as demonstrated in examples 09-12.

Example 09:

```
-- Start
-- PAUSE3_With_HourGlass_WHILELOOP_ProcessMessage.RMD
SET VAR vPauseMessage TEXT = +
((CHAR(013))+ 'Computing - Please Wait .....')
CLS
PAUSE 3 USING .vPauseMessage +
CAPTION ' Pause 3 with ProcessMessage' +
OPTION ICON_FILE Hourglass.GIF +
|BACK_COLOR WHITE +
|MESSAGE_COLOR WHITE +
|MESSAGE_FONT_NAME VERDANA +
|MESSAGE_FONT_COLOR RED +
|MESSAGE_FONT_SIZE 10 +
|THEMENAME R:BASE Rocks!
SET VAR vCounter INT = 1
WHILE vCounter < 2500000 THEN
    SET VAR vCounter = (.vCounter + 1)
    ProcessMessage
ENDWHILE
CLEAR VARIABLE vPauseMessage, vCounter
CLS
RETURN
-- End
```

Example 10:

```
-- Start
-- PAUSE3_With_Gauge_Razzmatazz_WHILELOOP_ProcessMessage.RMD
-- R:BASE Rocks: [R218,G228,B246]
CLS
PAUSE 3 USING '      Calculating      ...   Please Stand By   ...' +
CAPTION ' Pause 3 with Gauge + ProcessMessage' ICON APP +
OPTION GAUGE_VISIBLE ON +
|GAUGE_COLOR [R218,G228,B246] +
|GAUGE_INTERVAL 10 +
|MESSAGE_FONT_NAME VERDANA +
|MESSAGE_FONT_SIZE 10 +
|MESSAGE_FONT_COLOR BLUE +
|THEMENAME Razzmatazz
SET VAR vCounter INTEGER = 1
WHILE vCounter < 250000 THEN
    SET VAR vCounter = (.vCounter + 1)
    ProcessMessage
ENDWHILE
CLEAR VARIABLE vCounter
CLS
RETURN
-- End
```

Example 11:

```
-- Start
-- PAUSE3_With_Gauge_RBASERocks_WHILELOOP_ProcessMessage.RMD
-- R:BASE Rocks: [R123,G82,B41] or 2708091
CLS
PAUSE 3 USING '      Calculating      ...   Please Stand By   ...' +
CAPTION ' Pause 3 with Gauge + ProcessMessage' ICON APP +
OPTION GAUGE_VISIBLE ON +
|GAUGE_COLOR 2708091 +
|GAUGE_INTERVAL 10 +
|MESSAGE_FONT_NAME VERDANA +
|MESSAGE_FONT_SIZE 10 +
|MESSAGE_FONT_COLOR RED +
|THEMENAME R:BASE Rocks!
SET VAR vCounter INTEGER = 1
WHILE vCounter < 250000 THEN
    SET VAR vCounter = (.vCounter + 1)
    ProcessMessage
ENDWHILE
CLEAR VARIABLE vCounter
CLS
RETURN
-- End
```

Example 12:

```
-- Start
-- PAUSE3_With_Gauge_SteelBlue_WHILELOOP_ProcessMessage.RMD
-- Steel Blue
CLS
PAUSE 3 USING '          Calculating          ...   Please Stand
By ...' +
CAPTION '          Pause 3 with Gauge + PM' +
ICON WINDOWS +
OPTION GAUGE_VISIBLE ON +
|GAUGE_COLOR RED +
|GAUGE_INTERVAL 10 +
|MESSAGE_FONT_NAME VERDANA +
|MESSAGE_FONT_SIZE 10 +
|MESSAGE_FONT_COLOR WHITE +
|THEMENAME Steel Blue
SET VAR vCounter INTEGER = 1
WHILE vCounter < 2500000 THEN
    SET VAR vCounter = (.vCounter + 1)
    ProcessMessage
ENDWHILE
CLEAR VARIABLE vCounter
CLS
RETURN
-- End
```

Notice that examples 09-12 processes a huge WHILE loop while displaying the moving hour glass as well as the GAUGE.

Imagine the possibilities!

A PDF document is also available at:

From The Edge: <http://www.razzak.com/fte/>

A sample application and all command files are also available at:

Sample Applications: <http://www.razzak.com/sampleapplications/>